

# DosiRobot®

DosiRobot – Your Compact Solution for packing HARSHAW TLD dosimeters

## Dosimeters and holders to be used

Holder types: 8810, 8814, 8815, 8825

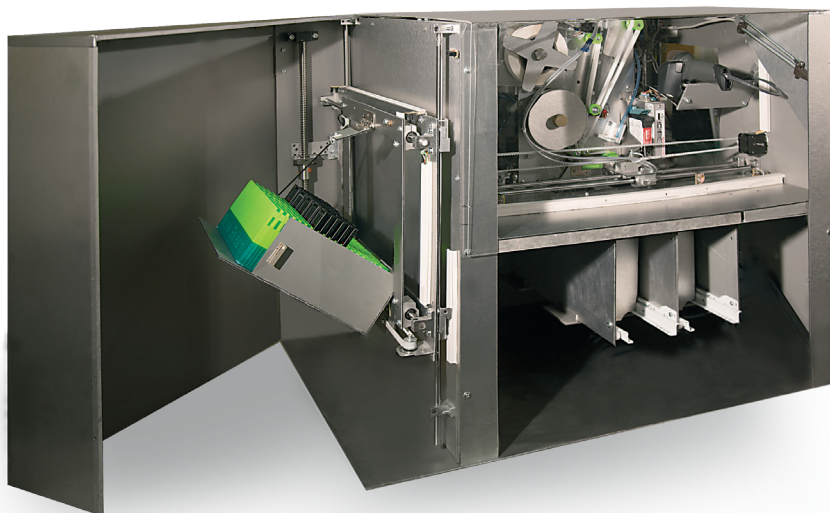
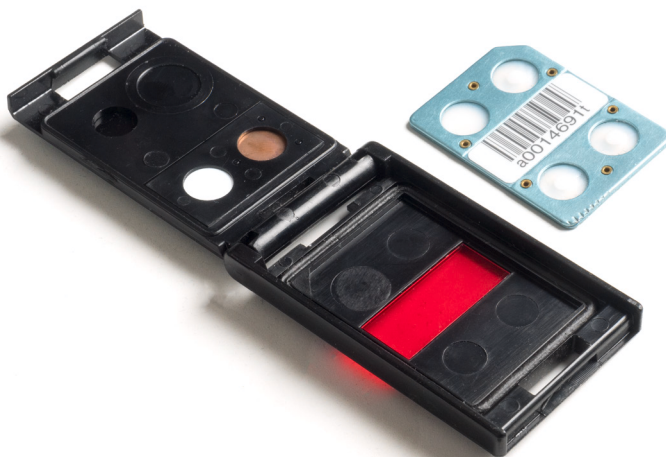
TLD Cards: All types of HARSHAW TLD card like 0110, 7776, 1110

## Functions

- Packing of HARSHAW TLD Cards to holders
- Sorting: Identify and Sort out cards with invalid ECC (WinREMS); Identify and Sort out suspicious TLD Cards (Dosibase GCC required)
- Labeling of Dosimeters before shipping
- Distinct ejection of assembled dosimeters

## DosiRobot® specifications

- Size 650 x 870 x 730 mm
- Weight - 45 kg
- Power consumption - 100 W
- Input air flow - 120 l / min 8 Bar
- Capacity of the holders cartridge - 100 holders
- Capacity of the dosimeter cartridge - 200 dosimeters
- Capacity of a unload shuttle - 100 holders
- Amount of unload shuttles - 2 pcs
- Printer type - Inkjet
- Productivity - 4 packed dosimeters per minute



info@dosibase.com  
www.dosibase.com  
Tel. +371 20214634  
Fax +371 67283626

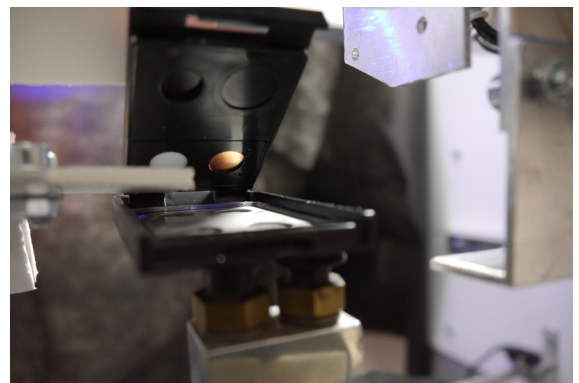
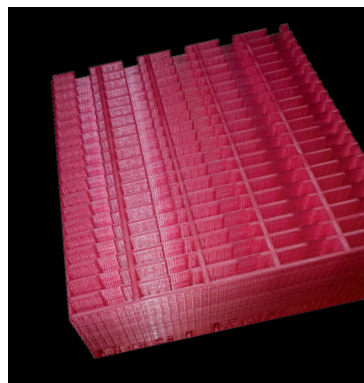
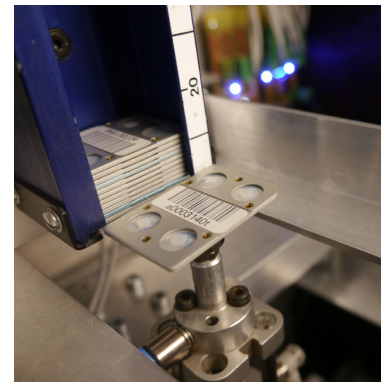
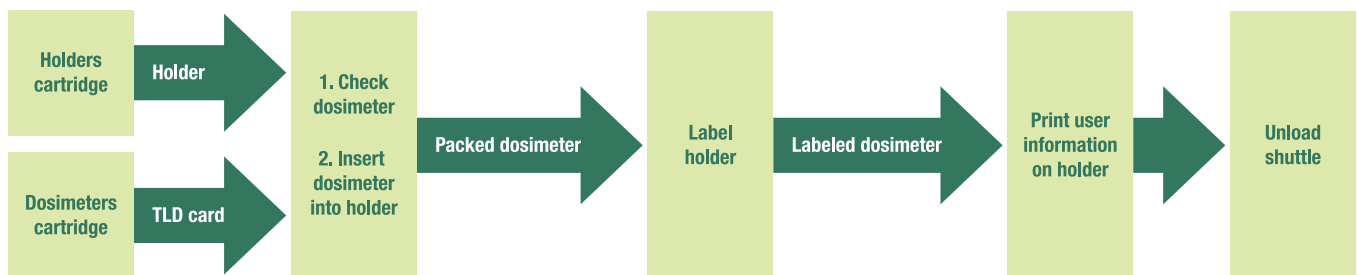
Address:  
Kr. Valdemara Str. 123-40,  
Riga, LV-1013, Latvia

DosiRobot utilizes a standard HARSHAW TLD Card Cartridge to feed up to 200 TLD cards and special cartridges for TLD holders. Electromechanic / Pneumatic drives control the quick and reliable assembly of TLD Badges. As an additional feature TLD cards can be checked against various criteria such as valid ECC or poor glow curves (additional software required).

Badges can be marked with typical information like: name of wearer, waering period, company etc.

Various bar code scanners make ensure proper QC and traceability. Collection of assembeled badges in two chutes (default) separate companies or departments. Dosirobot can work standalone or multi-unit environment to increase throughput.

## Process



info@dosibase.com  
 www.dosibase.com  
 Tel. +371 20214634  
 Fax +371 67283626

Address:  
 Kr. Valdemara Str. 123-40,  
 Riga, LV-1013, Latvia